

QUADRO EPIDEMIOLOGICO IN PUGLIA E SUE PROVINCE CON RELATIVI GRAFICI
venerdì 5 giugno 2020

PUGLIA Popolazione: 4.032.576							BARI Popolazione: 1.251.994				BAT Popolazione: 393.534				BRINDISI Popolazione: 392.975				FOGGIA Popolazione: 622.183				LECCE Popolazione: 795.134				TARANTO Popolazione: 576.756			
T	P	TM	TG	AP	L	C	P	M	L	C	P	M	L	C	P	M	L	C	P	M	L	C	P	M	L	C	P	M	L	C
124912	4504	503	855	3146	11,2%	0,11%	1460	134	9,2%	0,12%	385	59	15,3%	0,10%	651	64	9,8%	0,17%	1155	150	13,0%	0,19%	517	69	13,3%	0,07%	280	27	9,6%	0,05%

Legenda: T=Tamponi NP= Nuovi Positivi NM=Nuovi Morti TG=TOTGuariti

Legenda: L=Letalità (%M/P) C=Contagiosità (%P/popolazione) PO=Positività (%P/T) N.A.=Non attribuiti

Fonte dati: Regione Puglia Elaborazione dati: Carmelo NESTA

1046

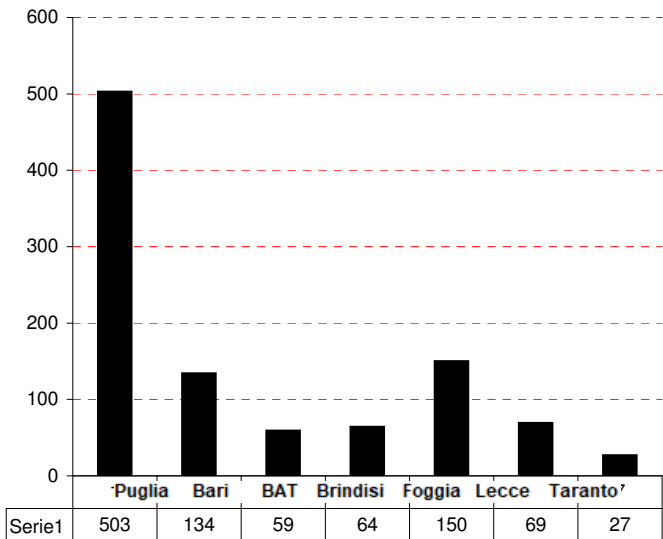
56

Data	PUGLIA									BARI		BAT		BRINDISI		FOGGIA		LECCE		TARANTO	
	T	NP	NM	PO	TP	NG	AP	TG	TM	P	M	P	M	P	M	P	M	P	M	P	M
27/2	20	3	0	15,0%	3		3	0	0	0	0	0	0	0	0	0	0	0	0	3	0
28/2	40	0	0	0,0%	3	0	3	0	0	0	0	0	0	0	0	0	0	0	0	0	0
29/2	10	0	0	0,0%	3	0	3	0	0	0	0	0	0	0	0	0	0	0	0	0	0
1/3	7	1	0	14,3%	4	0	4	0	0	1	0	0	0	0	0	0	0	0	0	0	0
2/3	12	5	0	41,7%	9	0	9	0	0	0	0	1	0	0	0	2	0	2	0	0	0
3/3	20	1	0	5,0%	10	0	10	0	0	1	0	0	0	0	0	0	0	0	0	0	0
4/3	10	4	1	40,0%	14	0	13	0	1	1	0	0	0	0	0	3	1	0	0	0	0
5/3	43	7	0	16,3%	21	0	20	0	1	1	0	0	0	0	0	4	0	2	0	0	0
6/3	59	3	0	5,1%	24	0	23	0	1	1	0	1	0	0	0	0	0	1	0	0	0
7/3	92	15	1	16,3%	39	0	37	0	2	1	0	1	0	3	0	7	1	3	0	0	0
8/3	108	5	0	4,6%	44	0	42	0	2	0	0	0	0	0	0	1	0	4	0	0	0
9/3	77	12	0	15,6%	56	0	54	0	2	6	0	0	0	2	0	4	0	0	0	0	0
10/3	74	9	1	12,2%	65	0	62	0	3	4	0	1	0	1	0	1	1	2	0	0	0
11/3	140	25	0	17,9%	90	0	87	0	3	4	0	2	0	9	0	9	0	0	0	1	0
12/3	253	18	1	7,1%	108	0	104	0	4	6	0	2	0	1	0	1	0	6	1	2	0
13/3	180	47	1	26,1%	155	0	150	0	5	12	0	5	0	4	0	18	0	6	1	2	0
14/3	232	42	4	18,1%	197	0	188	0	9	11	1	2	0	7	0	10	0	10	3	2	0
15/3	336	59	7	17,6%	256	0	240	0	16	13	4	4	1	14	0	12	0	14	2	2	0
16/3	327	50	2	15,3%	306	0	288	0	18	26	0	1	2	10	0	7	0	1	0	5	0
17/3	460	70	0	15,2%	376	0	358	0	18	35	0	10	0	0	0	18	0	7	0	0	0
18/3	475	62	4	13,1%	438	0	416	0	22	10	2	0	1	13	1	22	0	10	0	7	0
19/3	684	61	0	8,9%	499	0	477	0	22	12	0	0	0	11	0	20	0	12	0	6	0
20/3	956	64	0	6,7%	563	0	541	0	22	20	0	0	0	9	0	24	0	8	0	3	0
21/3	828	85	0	10,3%	648	0	626	0	22	29	0	2	0	10	0	27	0	15	0	2	0
22/3	543	105	2	19,3%	753	0	729	0	24	37	0	17	0	6	0	22	1	17	1	6	0
23/3	601	97	6	16,1%	850	0	820	0	30	37	0	10	0	2	1	14	4	29	1	5	0
24/3	584	86	7	14,7%	936	0	899	0	37	36	3	3	0	1	0	29	3	12	1	5	0
25/3	878	78	4	8,9%	1014	0	973	0	41	32	1	3	0	13	0	22	2	3	1	5	0
26/3	968	136	17	14,0%	1150	0	1092	0	58	51	2	20	0	6	6	28	8	13	1	18	0
27/3	1024	129	4	12,6%	1279	25	1192	25	62	57	0	7	0	3	1	20	1	38	1	4	1
28/3	1267	121	2	9,6%	1400	0	1311	25	64	25	0	4	0	23	0	30	1	24	1	15	0
29/3	861	83	13	9,6%	1483	2	1379	27	77	49	2	2	0	4	1	22	10	0	0	6	0
30/3	1617	197	5	12,2%	1680	5	1566	32	82	76	1	5	0	12	0	28	3	54	1	22	0
31/3	956	97	19	10,1%	1777	0	1644	32	101	22	4	8	0	0	2	52	9	10	3	5	1
1/4	1136	144	19	12,7%	1921	25	1744	57	120	39	11	5	0	27	1	33	2	18	5	22	0
2/4	1345	131	15	9,7%	2052	8	1852	65	135	45	8	10	1	17	2	12	3	32	1	15	0
3/4	1270	100	20	7,9%	2152	0	1932	65	155	41	0	3	1	10	2	25	6	6	11	15	0
4/4	1053	61	9	5,8%	2213	29	1955	94	164	21	6	0	0	16	2	19	0	3	1	2	0

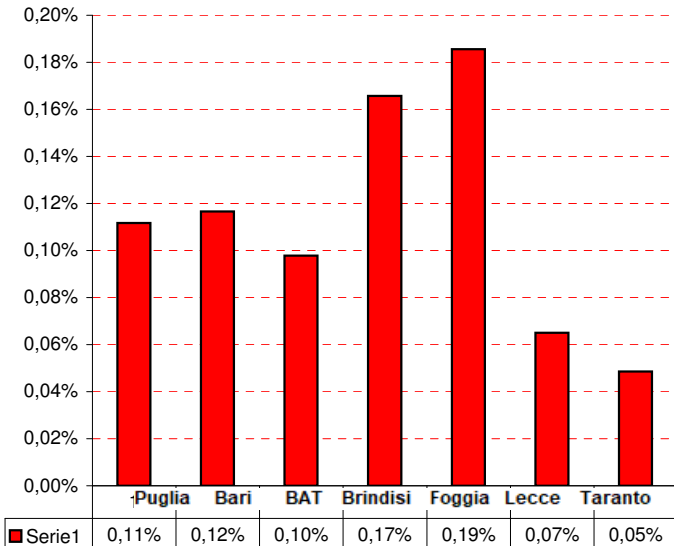
5/4	1103	75	9	6,8%	2288	19	2002	113	173	28	0	9	1		12	0		18	5		6	3		2	0	
6/4	1979	126	13	6,4%	2414	21	2094	134	186	17	6	39	2		11	0		41	4		10	0		8	1	
7/4	1090	70	14	6,4%	2484	34	2116	168	200	27	8	0	0		5	1		30	5		6	0		2	0	
8/4	1344	115	10	8,6%	2599	0	2221	168	210	27	1	35	1		22	1		17	4		5	2		9	1	
9/4	1595	84	6	5,3%	2683	22	2277	190	216	9	1	0	0		15	0		49	1		6	2		5	2	
10/4	1724	94	12	5,5%	2777	45	2314	235	228	16	2	31	1		17	3		20	2		8	3		2	1	
11/4	1651	90	13	5,5%	2867	14	2377	249	241	27	8	17	0		18	0		3	3		15	0		10	2	
12/4	1510	86	6	5,7%	2953	28	2429	277	247	8	1	36	1		24	1		15	2		0	0		3	1	
13/4	949	77	7	8,1%	3030	9	2490	286	254	41	1	5	1		21	1		0	2		6	1		4	1	
14/4	1149	63	11	5,5%	3093	2	2540	288	265	27	8	5	0		24	0		5	3		1	0		1	0	
15/4	1447	64	10	4,4%	3157	35	2559	323	275	24	2	9	1		14	1		14	3		1	1		2	2	
16/4	1640	74	11	4,5%	3231	11	2611	334	286	16	2	15	1		11	3		24	4		1	0		7	1	
17/4	2120	69	8	3,3%	3300	30	2642	364	294	21	3	3	2		11	2		27	0		7	1		0	0	
18/4	2145	74	7	3,4%	3374	37	2672	401	301	25	1	2	1		19	1		15	1		9	2		4	1	
19/4	2175	103	2	4,7%	3477	26	2747	427	303	35	0	0	0		27	1		30	1		8	0		3	0	
20/4	1591	38	10	2,4%	3515	4	2771	431	313	7	3	0	0		15	1		14	4		1	1		1	1	
21/4	1795	55	25	3,1%	3570	28	2773	459	338	19	5	3	11		4	3		28	3		0	2		1	1	
22/4	2358	106	11	4,5%	3676	35	2833	494	349	28	4	20	0		7	1		37	3		9	2		5	1	
23/4	2068	106	10	5,1%	3782	37	2892	531	359	59	1	2	0		15	0		23	6		5	0		2	3	
24/4	2062	42	11	2,0%	3824	34	2889	565	370	21	7	1	0		5	1		13	2		0	1		2	0	
25/4	2156	30	8	1,4%	3854	37	2874	602	378	6	2	4	1		7	1		9	4		4	0		0	0	
26/4	1294	34	8	2,6%	3888	10	2890	612	386	8	1	1	2		10	0		8	5		5	0		2	0	
27/4	984	10	7	1,0%	3898	29	2864	641	393	3	0	2	1		2	2		3	4		0	0		0	0	
28/4	1520	22	2	1,4%	3920	13	2871	654	395	0	2	3	0		0	0		15	0		4	0		0	0	
29/4	1838	49	3	2,7%	3969	38	2879	692	398	16	0	0	1		1	1		28	1		4	0		0	0	
30/4	2126	43	5	2,0%	4012	16	2901	708	403	12	0	2	1		11	1		12	1		3	2		3	0	
1/5	1832	26	6	1,4%	4038	23	2898	731	409	3	3	1	0		11	0		6	3		2	0		3	0	
2/5	1078	34	2	3,2%	4072	26	2904	757	411	3	0	3	0		4	1		16	0		6	0		2	1	
3/5	1073	10	2	0,9%	4082	8	2904	765	413	3	0	2	0		1	0		2	0		2	2		0	0	
4/5	724	9	5	1,2%	4091	14	2894	779	418	6	1	0	2		0	1		2	1		0	0		1	0	
5/5	1961	16	4	0,8%	4107	19	2887	798	422	0	0	0	0		8	1		7	2		1	0		0	1	
6/5	1816	26	5	1,4%	4133	57	2851	855	427	4	0	1	0		7	0		9	2		2	2		3	1	
7/5	1252	46	3	3,7%	4179	149	2745	1004	430	29	0	0	0		3	1		10	1		2	0		2	1	
8/5	1928	11	2	0,6%	4190	76	2678	1080	432	5	1	0	1		0	0		5	0		1	0		0	0	
9/5	1919	30	0	1,6%	4220	34	2674	1114	432	20	0	1	0		4	0		5	0		0	0		0	0	
10/5	1756	27	5	1,5%	4247	82	2614	1196	437	22	1	0	1		1	1		3	2		1	0		0	0	
11/5	1338	14	3	1,0%	4261	136	2489	1332	440	7	0	0	1		0	0		5	1		1	1		1	0	
12/5	1755	10	5	0,6%	4271	128	2366	1460	445	7	0	0	2		1	2		1	1		0	0		1	0	
13/5	2221	10	4	0,5%	4281	106	2266	1566	449	2	2	0	0		2	0		2	2		3	0		1	0	
14/5	1844	9	1	0,5%	4290	77	2197	1643	450	2	0	1	1		2	0		2	0		0	0		2	0	
15/5	2110	10	0	0,5%	4300	81	2126	1724	450	1	0	0	0		5	0		4	0		0	0		0	0	
16/5	1924	8	2	0,4%	4308	83	2049	1807	452	2	1	0	0		4	0		1	0		1	1		0	0	
17/5	1424	5	7	0,4%	4313	85	1962	1892	459	1	0	0	5		3	1		1	0		0	0		0	1	
18/5	866	8	1	0,9%	4321	28	1941	1920	460	7	0	0	0		0	1		1	0		0	0		0	0	
19/5	1933	10	2	0,5%	4331	62	1887	1982	462	0	0	0	1		7	1		1	0		1	0		0	0	1
20/5	2061	13	5	0,6%	4344	45	1850	2027	467	1	0	2	0		6	2		2	1		0	2		1	0	1
21/5	1694	7	0	0,41%	4351	69	1788	2096	467	4	0	0	0		2	0		1	0		0	0		0	0	
22/5	2113	27	4	1,28%	4378	24	1787	2120	471	13	1	0	1		7	2		3	0		2	0		2	0	
23/5	2036	8	3	0,39%	4386	37	1755	2157	474	1	1	0	0		7	1		0	0		0	1		0	0	

24/5	1832	11	1	0,60%	4397	21	1744	2178	475	3	0	0	1		1	0		7	0		0	0		0	0		
25/5	1091	11	4	1,01%	4408	120	1631	2298	479	9	0	0	3		0	0		0	1		0	0		2	0		
26/5	2203	2	3	0,09%	4410	138	1492	2436	482	0	0	1	2		1	0		0	0		0	1		0	0		
27/5	2626	10	1	0,38%	4420	35	1466	2471	483	0	0	0	0		0	1		10	0		0	0		0	0		
28/5	2477	5	1	0,20%	4425	119	1351	2590	484	0	0	0	0		1	1		1	0		2	0		1	0		
29/5	2642	4	5	0,15%	4429	109	1241	2699	489	2	4	0	0		0	0		0	1		2	0		0	0		
30/5	2177	8	0	0,37%	4437	69	1180	2768	489	7	0	0	0		0	0		0	0		0	0		0	0	1	
31/5	1860	4	4	0,22%	4441	45	1135	2813	493	2	1	0	3		0	0		2	0		0	0		0	0		
1/6	988	4	2	0,40%	4445	24	1113	2837	495	3	1	0	0		0	0		1	1		0	0		0	0		
2/6	1810	1	2	0,06%	4446	102	1010	2939	497	1	0	0	0		0	2		0	0		0	0		0	0		
3/6	1046	1	3	0,10%	4447	13	995	2952	500	0	1	0	0		0	0		1	2		0	0		0	0		
4/6	2543	4	3	0,16%	4451	70	926	3022	503	1	2	0	0		1	0		0	0		2	0		0	1		
5/6																											
6/6																											
7/6																											
8/6																											
9/6																											
10/6																											
11/6																											
12/6																											
13/6																											
14/6																											
15/6																											
16/6																											
17/6																											
18/6																											
19/6																											
20/6																											
21/6																											
22/6																											
23/6																											
24/6																											
25/6																											
26/6																											
27/6																											
28/6																											
29/6																											
30/6																											
1/7																											
2/7																											
3/7																											
4/7																											
5/7																											
6/7																											
7/7																											
8/7																											
9/7																											
Data	T	P	M	PO						P	M	P	M		P	M		P	M		P	M		P	M		
	PUGLIA									BARI		BAT			BRINDISI			FOGGIA			LECCE			TARANTO			

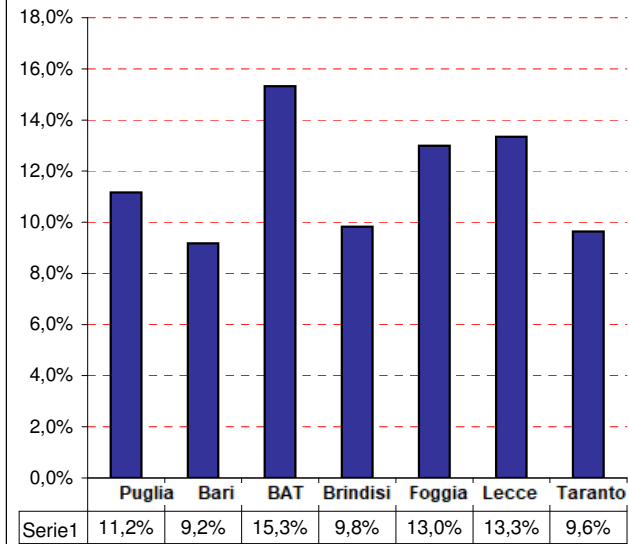
Numero di morti



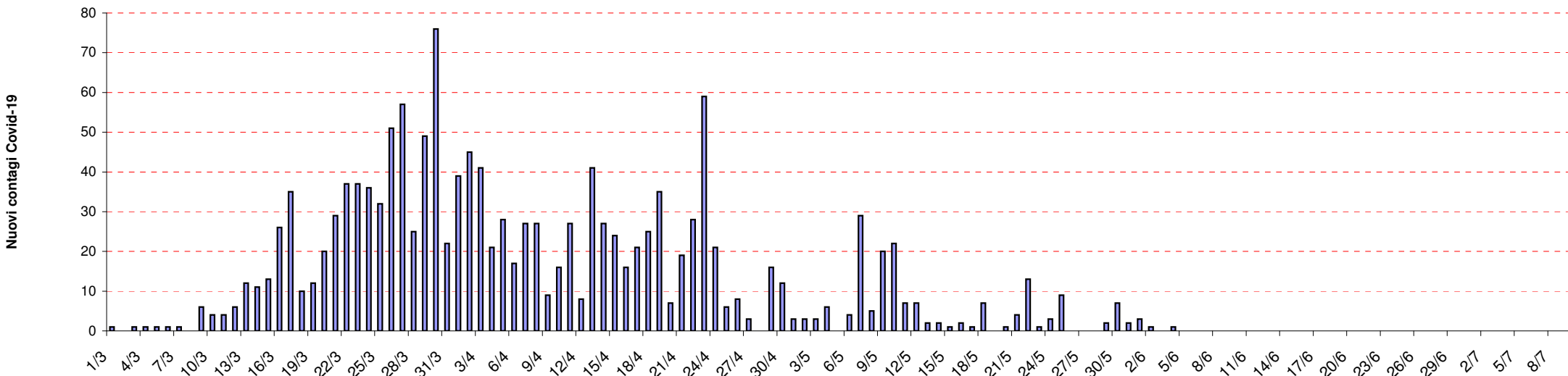
Contagiosità = Positivi/Popolazione %



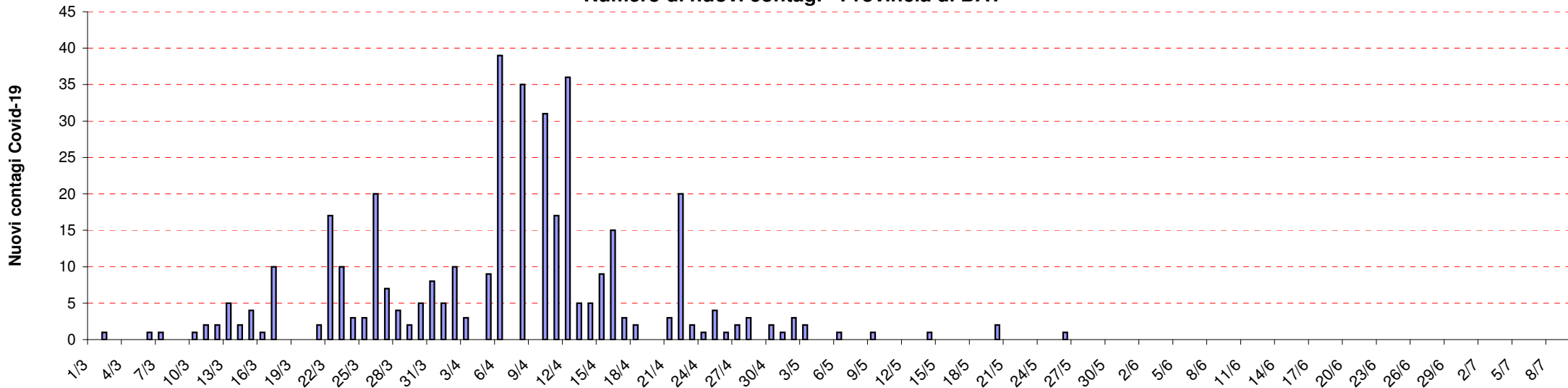
Letalità = Morti/Positivi %



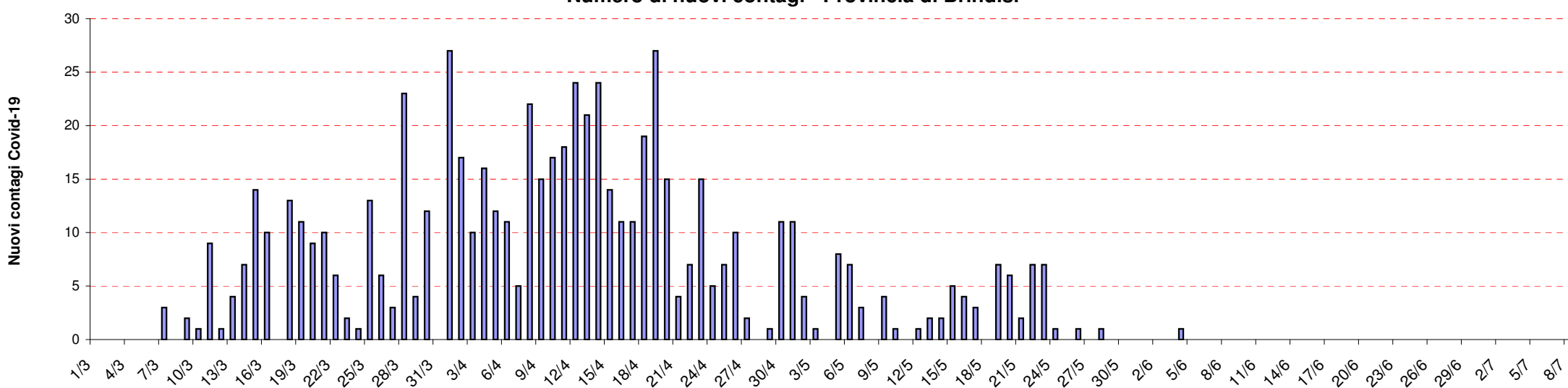
Numero di nuovi contagi - Provincia di Bari



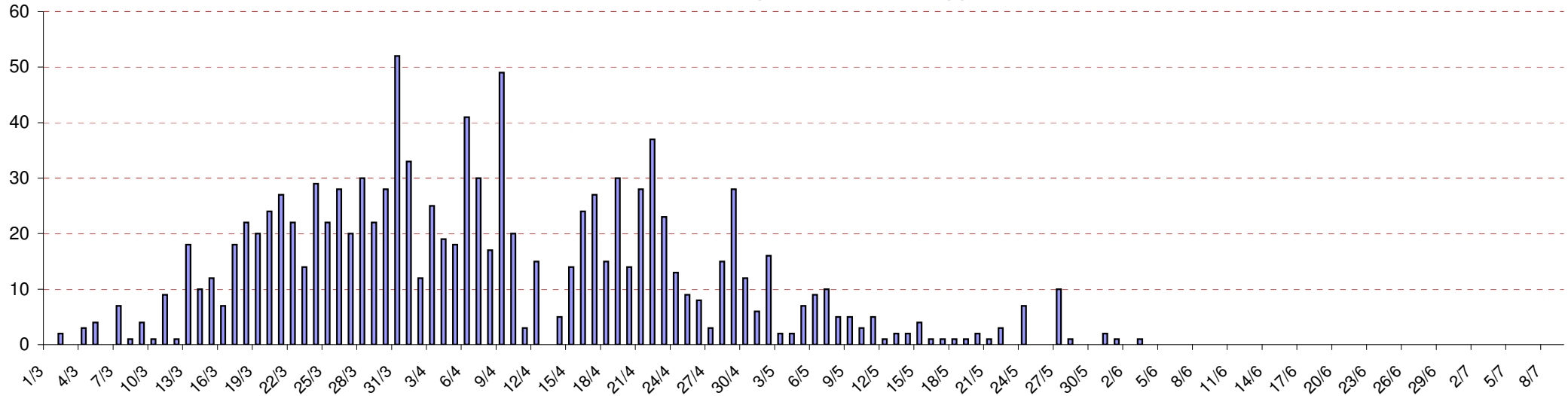
Numero di nuovi contagi - Provincia di BAT



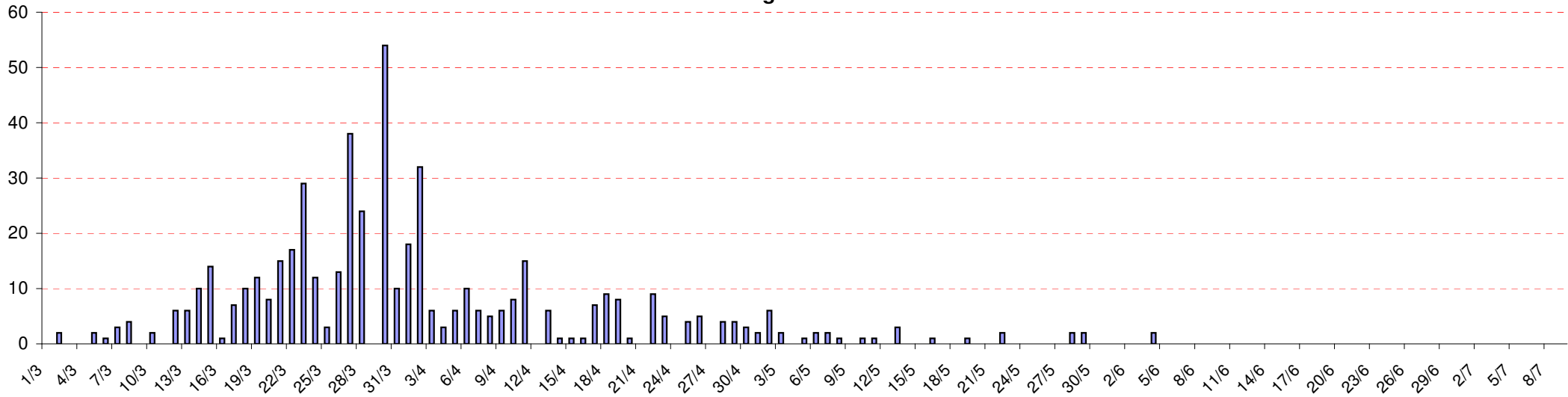
Numero di nuovi contagi - Provincia di Brindisi



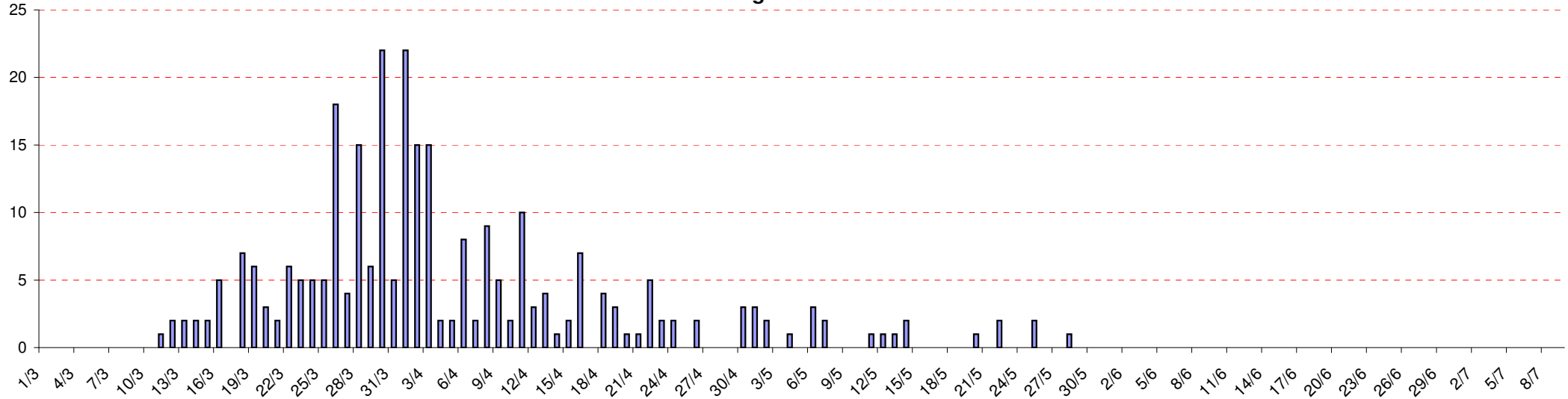
Numero di nuovi contagi - Provincia di Foggia



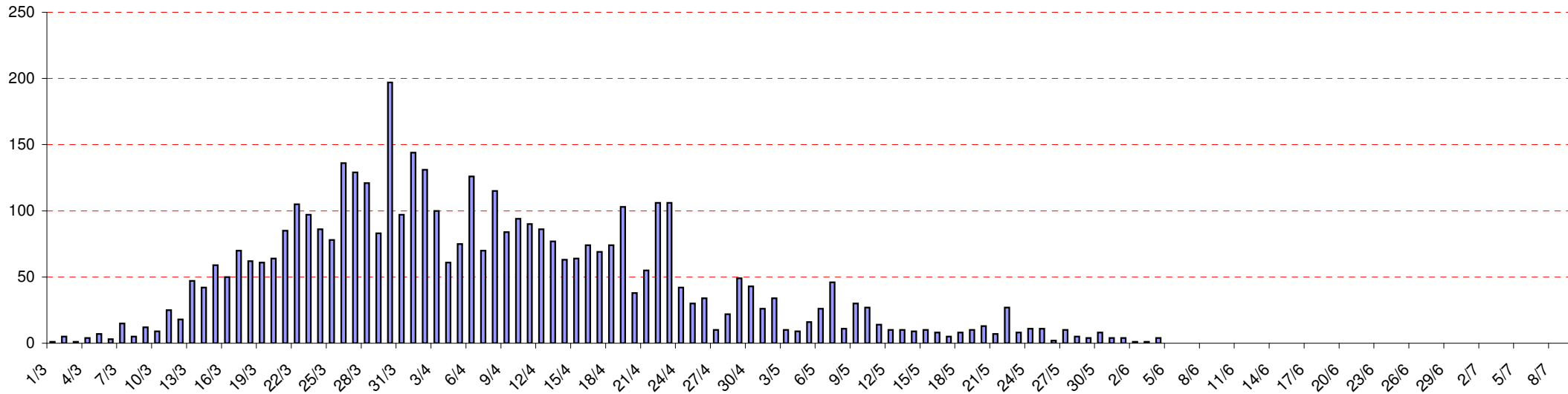
Numero di nuovi contagi - Provincia di Lecce



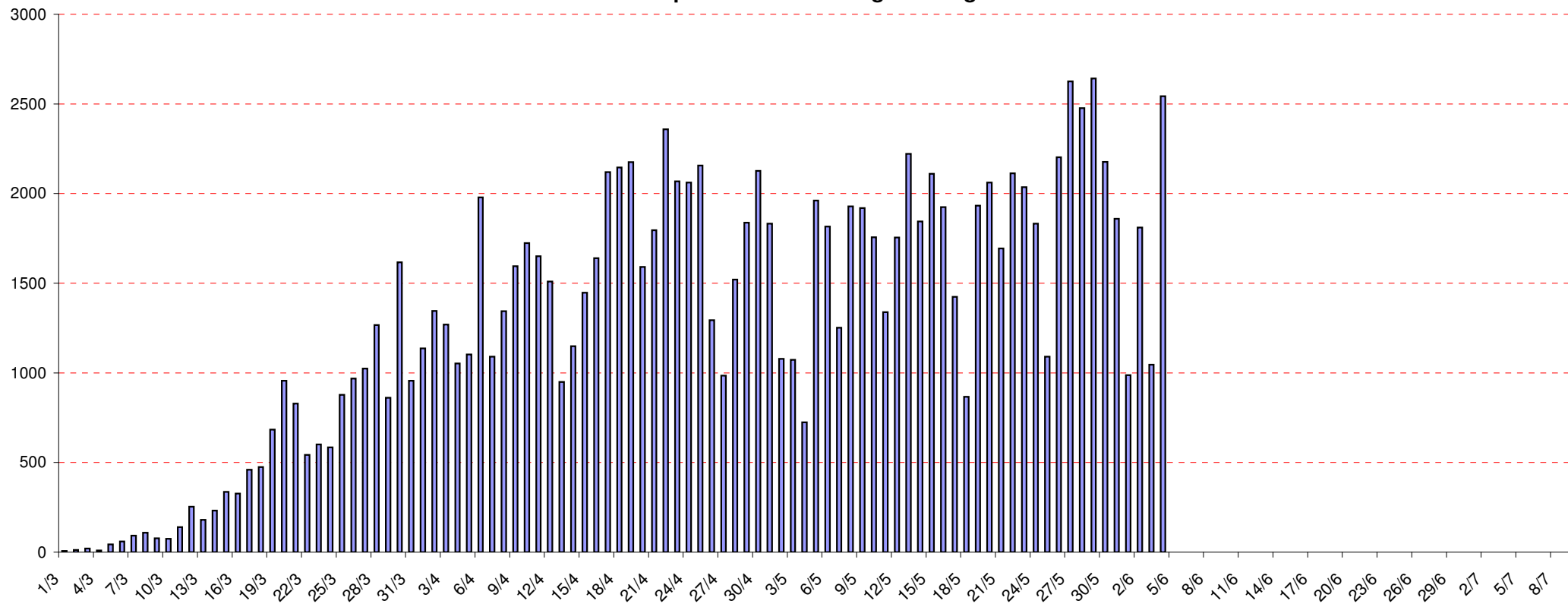
Numero di nuovi contagi - Provincia di Taranto



Numero di nuovi contagi - Regione Puglia



Numero di Tamponi effettuati - Regione Puglia



Tasso di positività - Positivi/Tamponi %

